

CGate-01 IoT dedicated Gateway

ver 1.0

- ✓ Suitable for Modbus Devices IoT Application
- ✓ Cloud monitoring and cloud backup applications
- ✓ Active Instant Modbus-TCP Slave device Monitoring Management
- ✓ Active Instant Modbus-RTU Slave device Monitoring Management
- ✓ Web instant monitoring and management functions



Product Features

✕ Easy Setting, Plug & Play

Just need to connect the Modbus devices to CGate- 01 and complete basic settings . CGate-01 will take the initiative and regularly to read the information, transfer command and store it in SQL database . No additional program development, just through the Web Console can reach all the basic operations .

✕ Web HMI, full-featured, easy to operate(web console)

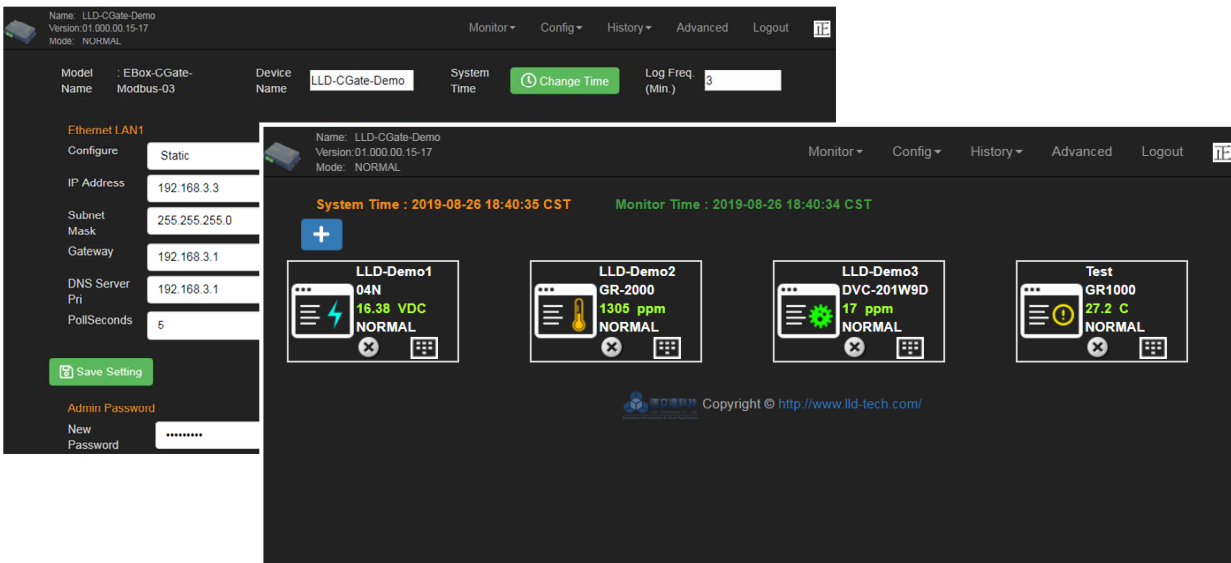
Web Console functions in CGate-01 allow users to cross-platform in different operating system (Windows 、Linux, iOS...) 、different hardware environment (PC 、Pad 、Smart Phone...) 、by simply using the graphic interface displayed in built-in standard Web Browser on the host 、easy to understand and easy to use 、which can make real-time monitoring 、settings 、operating information query and upgrading operations .

✕ Database Architecture, easy for Cloud application

CGate-01 adopts SQL-Based database architecture , mainly recorded the machine and operation related settings, also stored in the system record of the machine . The database stored in CGate-01 can achieve the database synchronization request through standard SQL database functionality to read data from remote or cloud host, to facilitate the subsequent data analysis jobs

✕ Add New Modbus devices by yourself

CGate-01 is used to set the Modbus Slave device by "adding" the connected device . In addition to the built-in original connectable device menu , users can add other undefined Modbus Slave devices and their detailed parameters through the Web Console to make the connected devices more complete .



Suitable Application

- ☆ Solar Power Monitoring
- ☆ Measurement Instruments (IoT)
- ☆ Saving Application
- ☆ Intelligent Building Environment Monitor

Product Specifications

Applications

Modbus-RTU Instant device monitoring and management

- ▶ Type of Connecting devices : Modbus-RTU / Modbus-TCP Slave
- ▶ Total monitoring points : 32 (per EBox-CGate-Modbus-04)
- ▶ Single device monitoring points : 8 (each Modbus Slave device)
- ▶ Max. no. of connected devices@RS-485 : 4 (less than total 32 monitoring points)
- ▶ Max. no. of connected devices@Ethernet : 4 (less than total 32 monitoring points)
- ▶ Monitoring : Real-time Status

Web Monitoring

- ▶ Function : Modbus device real-time status 、 System Parameters setting

- ▶ Protection : Login password
- ▶ Display language : TC 、 English
- ▶ Advanced function : Firmware upgrade
- ▶ Remote connection : 5 max.

Operation Log

- ▶ Content : System Status
- ▶ Capacity : 1,000

Database Application

- ▶ Function : Modbus device real-time status 、 System record
- ▶ Specification : MySQL Compatible

Type of Connecting Devices

User defined Modbus Slave Equipment

- ▶ Communication Format : Modbus-RTU 、 Modbus-TCP
- ▶ Modbus-RTU Slave Address 1~127 / UID : 0~127
- ▶ Coil/Register : 8 Max @ 1 Modbus Slave device
- ▶ Communication Interface : RS-485, Ethernet
- ▶ RS-485 Baud Rate : 1,200 ~ 115,200 bps
- ▶ RS-485 Parity Bit : None, Even, Odd,
- ▶ RS-485 Data Bits : 5, 6, 7, 8
- ▶ RS-485 Stop Bit : 1, 2 bits

Ordering Information

CGate-01 IoT dedicated Gateway

Optional Accessories

- DK-P01** Plastic DIN-Rail Kit
- DK-A01** 3-fix points aluminum DIN-Rail Kit



Hardware

- ▶ System Core : Allwinner H3 1.2GHz (ARM® Cortex-A7)

Network Interface

- ▶ Quantity : 1
- ▶ Type : 10/100BaseT Ethernet
- ▶ Connector : RJ45

RS-485 Modbus-RTU Interface

- ▶ Quantity : 1
- ▶ RS-485 Signal : Data+, Data-, GND
(Support Auto Data Direction Control)
- ▶ Built-in Terminal Resistor : 120Ω · By Jumper
- ▶ Protection : 15KV ESD static protection, 400W Surge Protection
- ▶ Connector : 5.00mm Pluggable Terminal block

Simple Human Interface

- ▶ Dip Switch : 2 points
- ▶ LED Indicator : power, network, serial port, operation Status
- ▶ Buzzer : 1 set

Power

- ▶ Working Voltage : DC 5VDC
- ▶ Power Consumption : <10W (Not include USB device connected)
- ▶ Power Connector : 5.00mm terminal block

Reserved Interface

- ▶ USB: 1 (A Type)

Others

- ▶ Real Time Clock : 1 set
- ▶ Applicable Temperature/Humidity : -20~70°C / 20%~80% RHG
- ▶ Material/Dimensions : 75 x 75 x 26mm
(fix boarder incl., terminal block excl.)
- ▶ Certification : CE, FCC

Exterior Schematic diagram

